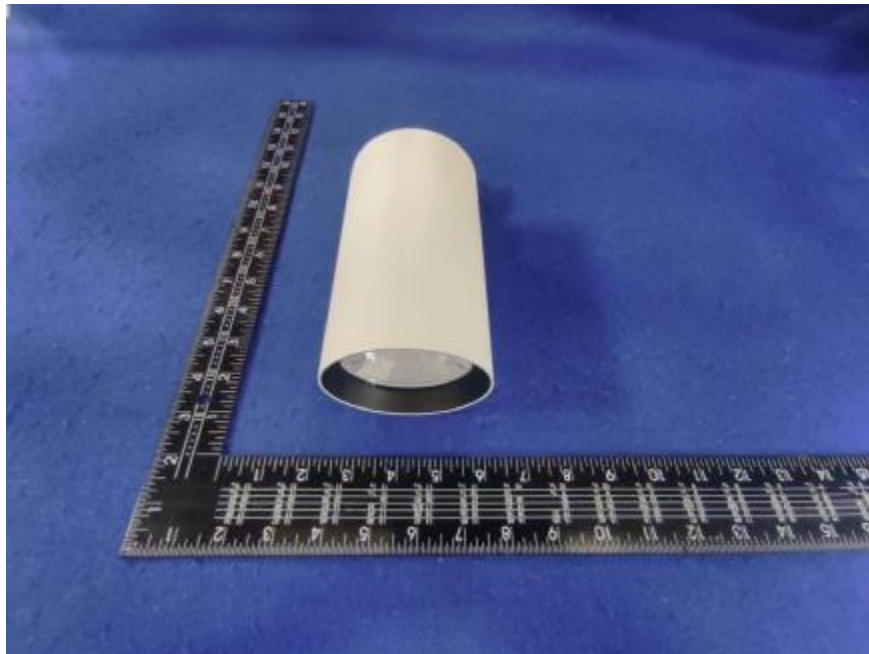


Luminaire Photograph



Light Output Ratio:	86.0%	
Luminaire Power:	36.41 W	
SHR Nominal:	0.75	Calculated using the TM5
SHR Maximum:	0.95	fine grid method.

C Range: 0 - 360DEG
C Interval: 30.0DEG
Test Speed: HIGH
Temperature: 25.3 °C
Operators: zoe
Test Date: 2024-3-28

Range: 0 - 180DEG
Interval: 1.0DEG
Test System: EVERFINE GO-SPEX500_V1 SYSTEM V2.00.461
Humidity: 65.0%
Test Distance: 3.160m [K=1.0000]
Remarks: LAMP: BXRE-30G2000-C-83 Ra:90
LENS: PM-0139C 60R
DRIVER: TDI044NA0900EF 900mA
30minutes warm-up

LUMINOUS INTENSITY DISTRIBUTION DIAGRAM

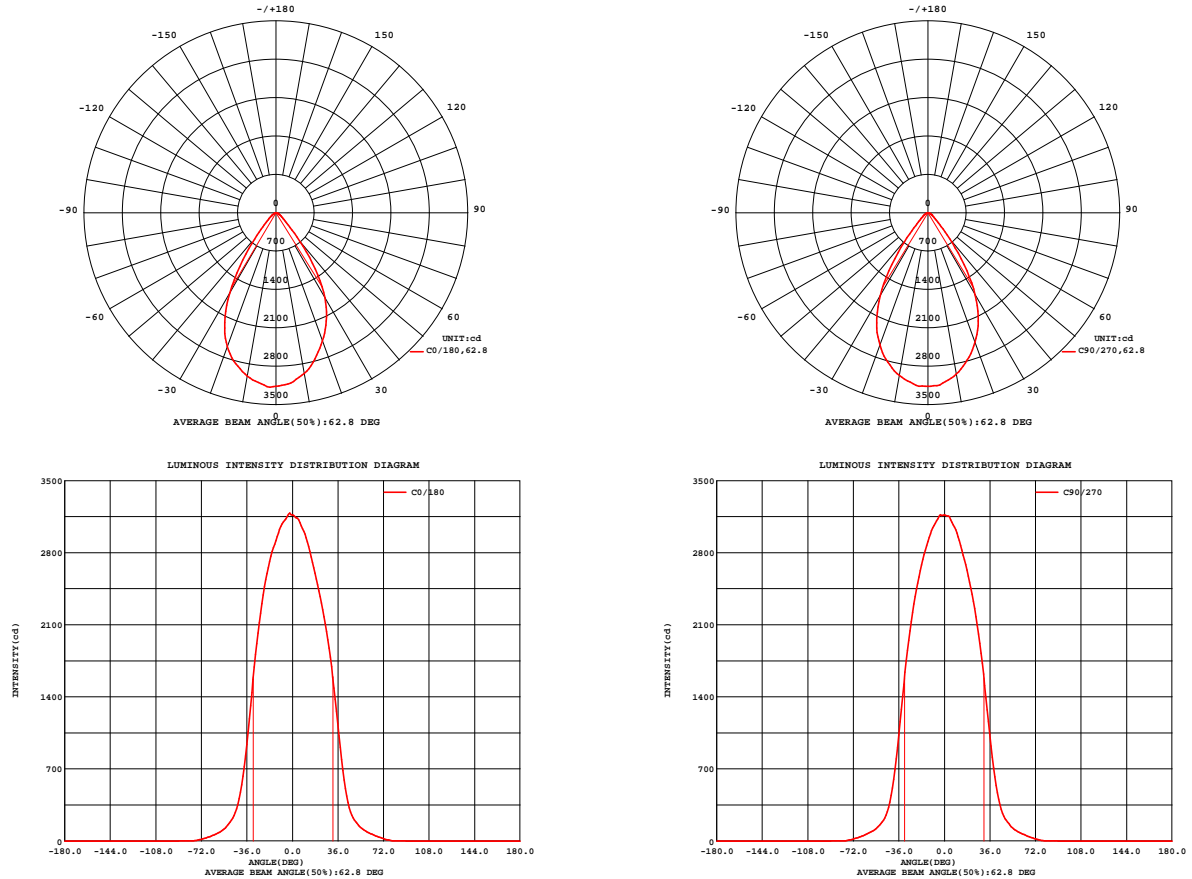


Fig. C0/C180

Fig. C90/C270

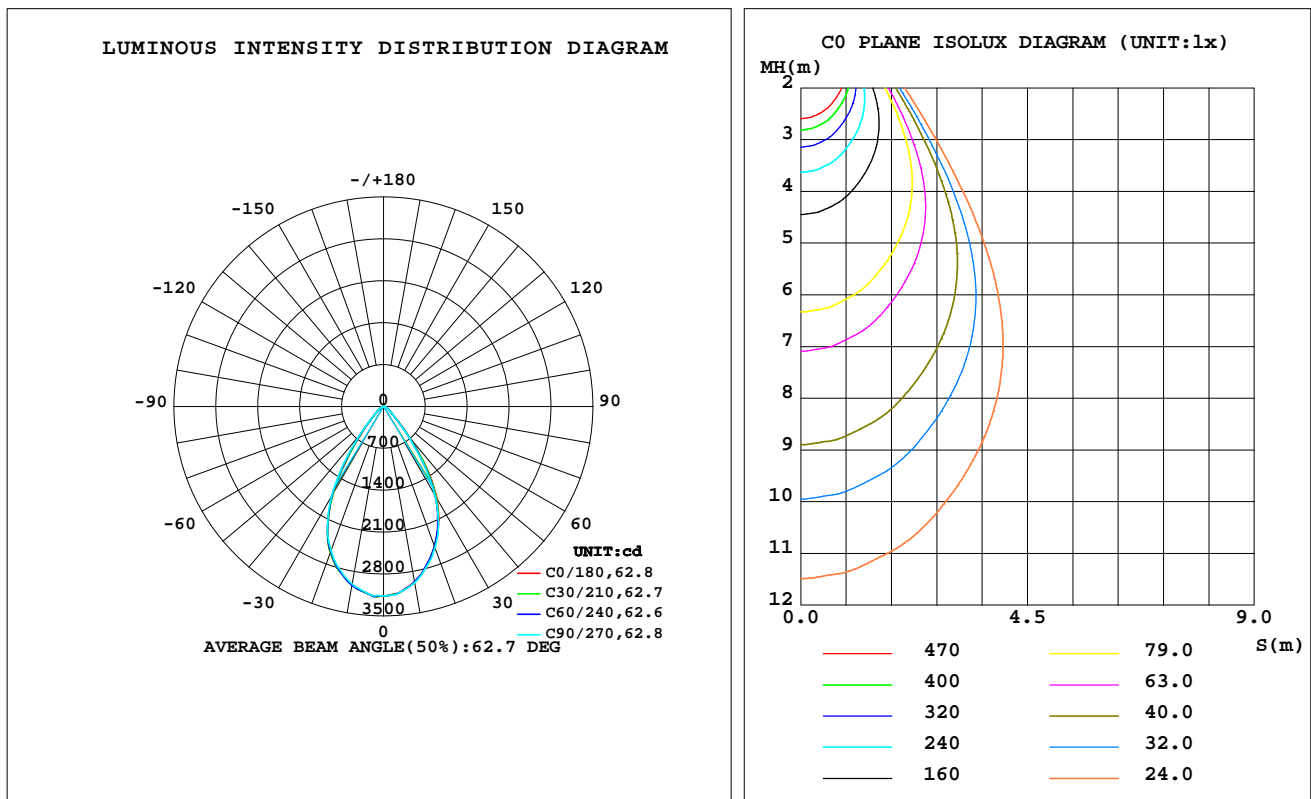
C Range: 0 - 360DEG
C Interval: 30.0DEG
Test Speed: HIGH
Temperature:25.3℃
Operators:zoe
Test Date:2024-3-28

Range: 0 - 180DEG
Interval: 1.0DEG
Test System:EVERFINE GO-SPEX500_V1 SYSTEM V2.00.461
Humidity:65.0%
Test Distance:3.160m [K=1.0000]
Remarks: LAMP:BXRE-30G2000-C-83 Ra:90
LENS:PM-0139C 60R
DRIVER:TDI044NA0900EF 900mA
30minutes warm-up

LUMINAIRE PHOTOMETRIC TEST REPORT

Test:U:120.11V I:0.3051A P:36.409W PF:0.9925 Freq:59.98Hz Lamp Flux:3734.05x1 lm		
NAME: 2319.221-H3AM	TYPE:	WEIGHT:
SPEC.: 3000K	DIM.:	SERIAL No.: 2403280238
MFR.: RISE	SUR.: 0.00580586m2	Shielding Angle:

DATA OF LAMP		PHOTOMETRIC DATA Eff: 88.24 lm/W			
MODEL	Brideglux	I _{max} (cd)	3184	S/MH(C0/180)	0.91
NOMINAL POWER(W)	36	LOR(%)	86.0	S/MH(C90/270)	0.93
RATED VOLTAGE(V)	120	TOTAL FLUX(lm)	3212.9	UP,DN(C0-180)	0.0,43.1
NOMINAL FLUX(lm)	3734.05	CIE CLASS	DIRECT	UP,DN(C180-360)	0.0,42.9
LAMPS INSIDE	1	up(%)	0.0	CIBSE SHR NOM	0.75
TEST VOLTAGE(V)	120	down(%)	86.0	CIBSE SHR MAX	0.95



C Range: 0 - 360DEG
C Interval: 30.0DEG
Test Speed: HIGH
Temperature:25.3℃
Operators:zoe
Test Date:2024-3-28

Range: 0 - 180DEG
Interval: 1.0DEG
Test System:EVERFINE GO-SPEX500_V1 SYSTEM V2.00.461
Humidity:65.0%
Test Distance:3.160m [K=1.0000]
Remarks: LAMP:BXRE-30G2000-C-83 Ra:90
LENS:PM-0139C 60R
DRIVER:TDI044NA0900EF 900mA
30minutes warm-up

ZONAL FLUX DIAGRAM

ZONAL FLUX DIAGRAM:

	C0	C45	C90	C135	C180	C225	C270	C315		zone	total	%lum,lamp
10	2979	2982	2990	3005	3026	3033	3013	2987	0- 10	294.2	294.2	9.16,7.88
20	2488	2487	2514	2575	2598	2594	2564	2531	10- 20	785.1	1079	33.6,28.9
30	1786	1750	1726	1706	1690	1708	1748	1789	20- 30	997.0	2076	64.6,55.6
40	685.6	662.2	623.5	574.1	546.3	556.5	599.7	666.3	30- 40	716.4	2793	86.9,74.8
50	186.7	184.2	181.0	175.5	168.5	167.7	170.4	183.9	40- 50	252.8	3045	94.8,81.6
60	83.27	83.95	79.91	74.68	70.45	72.43	75.85	79.77	50- 60	106.1	3152	98.1,84.4
70	31.16	31.20	28.25	25.11	22.51	23.43	25.98	28.72	60- 70	49.43	3201	99.6,85.7
80	1.000	0.9337	0.4609	0.3636	0.2570	0.2525	0.3305	0.5151	70- 80	11.77	3213	100,86
90	0	0	0	0	0	0	0	0	80- 90	0.1495	3213	100,86
100	0	0	0	0	0	0	0	0	90-100	0	3213	100,86
110	0	0	0	0	0	0	0	0	100-110	0	3213	100,86
120	0	0	0	0	0	0	0	0	110-120	0	3213	100,86
130	0	0	0	0	0	0	0	0	120-130	0	3213	100,86
140	0	0	0	0	0	0	0	0	130-140	0	3213	100,86
150	0	0	0	0	0	0	0	0	140-150	0	3213	100,86
160	0	0	0	0	0	0	0	0	150-160	0	3213	100,86
170	0	0	0	0	0	0	0	0	160-170	0	3213	100,86
180	0	0	0	0	0	0	0	0	170-180	0	3213	100,86
DEG	LUMINOUS INTENSITY:cd									UNIT:lm		

C Range: 0 - 360DEG
C Interval: 30.0DEG
Test Speed: HIGH
Temperature:25.3℃
Operators:zoe
Test Date:2024-3-28

Range: 0 - 180DEG
Interval: 1.0DEG
Test System:EVERFINE GO-SPEX500_V1 SYSTEM V2.00.461
Humidity:65.0%
Test Distance:3.160m [K=1.0000]
Remarks: LAMP:BXRE-30G2000-C-83 Ra:90
LENS:PM-0139C 60R
DRIVER:TDI044NA0900EF 900mA
30minutes warm-up

LUMINANCE LIMITATION CURVES

Test:U:120.11V I:0.3051A P:36.409W PF:0.9925 Freq:59.98Hz
Lamp Flux:3734.05x1 lm

NAME: 2319.221-H3AM

TYPE:

WEIGHT:

SPEC.: 3000K

DIM.:

SERIAL No.: 2403280238

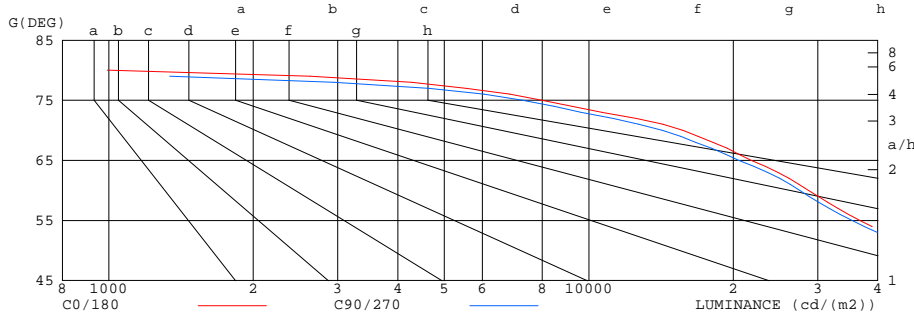
MFR.: RISE

SUR.: 0.00580586m2

Shielding Angle:

LUMINANCE LIMITATION CURVES

GLARE	CLASS	ILLUMINANCE (lx)							
1.15	A	2000	1000	500	<=300				
1.50	B		2000	1000	500	<=300			
1.85	C			2000	1000	500	<=300		
2.20	D				2000	1000	500	<=300	
2.55	E					2000	1000	500	<=300



LUMINANCE cd/(m2)		
G(180)	C0/180	C90/270
85	294	247
80	993	457
75	7967	7268
70	15698	14222
65	21792	20531
60	28693	27523
55	36710	35377
50	50054	48500
45	78665	74639

C Range: 0 - 360DEG
C Interval: 30.0DEG
Test Speed: HIGH
Temperature:25.3℃
Operators:zoe
Test Date:2024-3-28

Range: 0 - 180DEG
Interval: 1.0DEG
Test System:EVERFINE GO-SPEX500_V1 SYSTEM V2.00.461
Humidity:65.0%
Test Distance:3.160m [K=1.0000]
Remarks: LAMP:BXRE-30G2000-C-83 Ra:90
LENS:PM-0139C 60R
DRIVER:TDI044NA0900EF 900mA
30minutes warm-up

CU AND LUMINAIRE BUDGETARY ESTIMATE DIAGRAM

Test:U:120.11V I:0.3051A P:36.409W PF:0.9925 Freq:59.98Hz
Lamp Flux:3734.05x1 lm

NAME: 2319.221-H3AM

TYPE:

WEIGHT:

SPEC.: 3000K

DIM.:

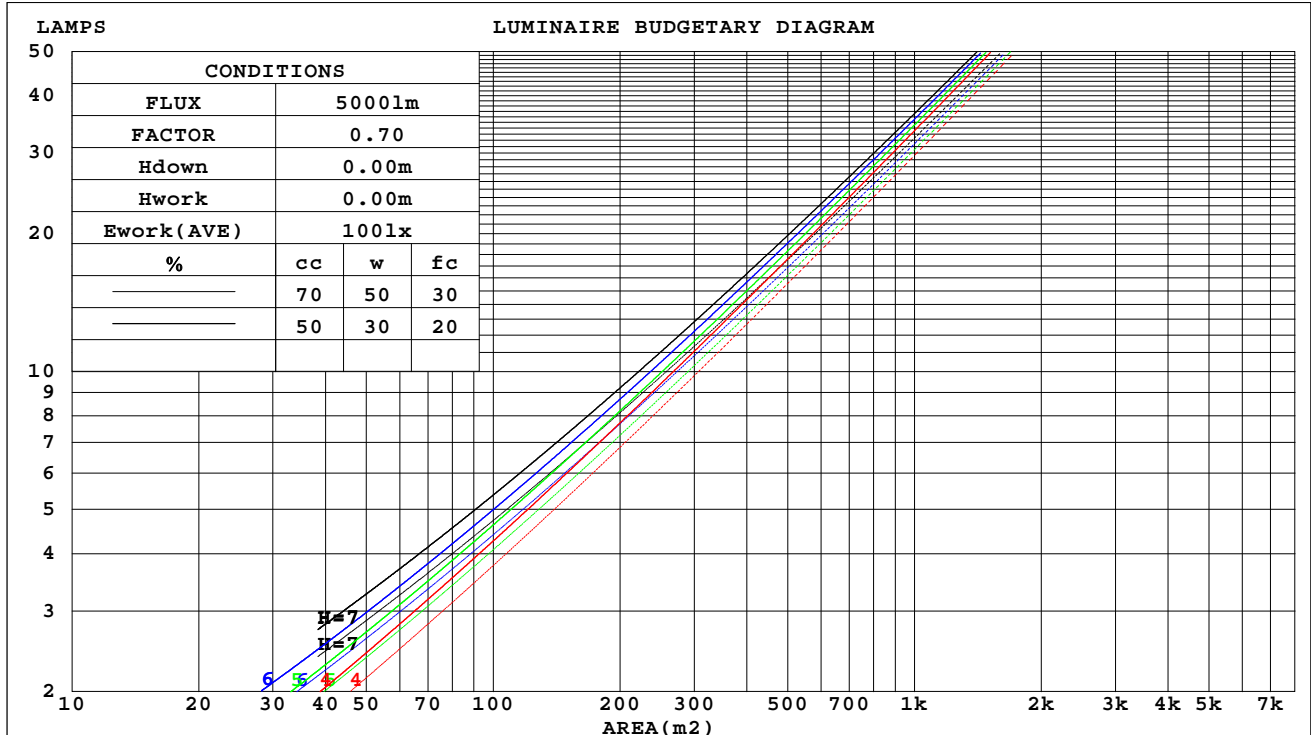
SERIAL No.: 2403280238

MFR.: RISE

SUR.: 0.00580586m2

Shielding Angle:

cc	80%			70%			50%			30%			10%			0
w	50%	30%	10%	50%	30%	10%	50%	30%	10%	50%	30%	10%	50%	30%	10%	0
fc	20%			20%			20%			20%			20%			0
RCR	RCR:Room Cavity Ratio															



C Range: 0 - 360DEG
C Interval: 30.0DEG
Test Speed: HIGH
Temperature:25.3℃
Operators:zoe
Test Date:2024-3-28

Range: 0 - 180DEG
Interval: 1.0DEG
Test System:EVERFINE GO-SPEX500_V1 SYSTEM V2.00.461
Humidity:65.0%
Test Distance:3.160m [K=1.0000]
Remarks: LAMP:BXRE-30G2000-C-83 Ra:90
LENS:PM-0139C 60R
DRIVER:TDI044NA0900EF 900mA
30minutes warm-up

WEC AND CCEC

Test:U:120.11V I:0.3051A P:36.409W PF:0.9925 Freq:59.98Hz Lamp Flux:3734.05x1 lm		
NAME: 2319.221-H3AM	TYPE:	WEIGHT:
SPEC.: 3000K	DIM.:	SERIAL No.: 2403280238
MFR.: RISE	SUR.: 0.00580586m2	Shielding Angle:

cc	80%			70%			50%			30%			10%			0
w	50%	30%	10%	50%	30%	10%	50%	30%	10%	50%	30%	10%	50%	30%	10%	0
fc	20%			20%			20%			20%			20%			0
RCR	RCR:Room Cavity Ratio						Wall Exitance Coefficients(WEC)									
0.0																
1.0	.163	.093	.029	.157	.090	.029	.147	.084	.027	.137	.079	.025	.127	.074	.024	
2.0	.158	.086	.026	.153	.084	.026	.143	.080	.025	.135	.076	.024	.127	.072	.023	
3.0	.150	.080	.024	.146	.078	.024	.138	.075	.023	.131	.072	.022	.124	.069	.021	
4.0	.143	.074	.022	.140	.073	.022	.133	.070	.021	.126	.068	.020	.120	.065	.020	
5.0	.136	.069	.020	.133	.068	.020	.127	.066	.019	.122	.064	.019	.116	.062	.019	
6.0	.130	.065	.019	.127	.064	.018	.122	.062	.018	.117	.061	.018	.112	.059	.018	
7.0	.124	.061	.017	.121	.060	.017	.117	.059	.017	.112	.058	.017	.108	.056	.016	
8.0	.118	.058	.016	.116	.057	.016	.112	.056	.016	.108	.055	.016	.104	.053	.016	
9.0	.113	.055	.015	.111	.054	.015	.107	.053	.015	.104	.052	.015	.100	.051	.015	
10.0	.108	.052	.014	.106	.051	.014	.103	.050	.014	.100	.050	.014	.097	.049	.014	

cc	80%			70%			50%			30%			10%			0
w	50%	30%	10%	50%	30%	10%	50%	30%	10%	50%	30%	10%	50%	30%	10%	0
fc	20%			20%			20%			20%			20%			0
RCR	RCR:Room Cavity Ratio			Ceiling Cavity Exitance Coefficients(CCEC)												
0.0	.164	.164	.164	.140	.140	.140	.096	.096	.096	.055	.055	.055	.018	.018	.018	
1.0	.148	.135	.124	.127	.116	.107	.087	.080	.074	.050	.046	.043	.016	.015	.014	
2.0	.136	.114	.096	.116	.098	.083	.080	.068	.058	.046	.039	.034	.015	.013	.011	
3.0	.126	.098	.076	.108	.084	.065	.074	.059	.046	.043	.034	.027	.014	.011	.009	
4.0	.117	.085	.061	.101	.074	.053	.069	.051	.037	.040	.030	.022	.013	.010	.007	
5.0	.110	.075	.050	.095	.065	.043	.065	.046	.031	.038	.027	.018	.012	.009	.006	
6.0	.104	.068	.041	.089	.059	.036	.062	.041	.026	.036	.024	.015	.012	.008	.005	
7.0	.099	.061	.035	.085	.053	.031	.059	.037	.022	.034	.022	.013	.011	.007	.004	
8.0	.094	.056	.030	.081	.049	.026	.056	.034	.019	.033	.020	.011	.011	.007	.004	
9.0	.089	.052	.026	.077	.045	.023	.053	.031	.016	.031	.019	.010	.010	.006	.003	
10.0	.085	.048	.023	.074	.042	.020	.051	.029	.014	.030	.017	.008	.010	.006	.003	

C Range: 0 - 360DEG
C Interval: 30.0DEG
Test Speed: HIGH
Temperature:25.3℃
Operators:zoe
Test Date:2024-3-28

Range: 0 - 180DEG
Interval: 1.0DEG
Test System:EVERFINE GO-SPEX500_V1 SYSTEM V2.00.461
Humidity:65.0%
Test Distance:3.160m [K=1.0000]
Remarks: LAMP:BXRE-30G2000-C-83 Ra:90
LENS:PM-0139C 60R
DRIVER:TDI044NA0900EF 900mA
30minutes warm-up

UGR(Unified Glare Rating) Table

Test:U:120.11V I:0.3051A P:36.409W PF:0.9925 Freq:59.98Hz Lamp Flux:3734.05x1 lm										
NAME: 2319.221-H3AM					TYPE:			WEIGHT:		
SPEC.: 3000K					DIM.:			SERIAL No.: 2403280238		
MFR.: RISE					SUR.: 0.00580586m2			Shielding Angle:		
ceiling/cavity	0.7	0.7	0.5	0.5	0.3	0.7	0.7	0.5	0.5	0.3
walls	0.5	0.3	0.5	0.3	0.3	0.5	0.3	0.5	0.3	0.3
working plane	0.2	0.2	0.2	0.2	0.2	0.2	0.2	0.2	0.2	0.2
Room dimensions	Viewed crosswise					Viewed endwise				
x = 2H y = 2H	19.8	20.9	20.1	21.0	21.2	19.5	20.5	19.7	20.7	20.9
3H	19.9	20.8	20.1	21.0	21.2	19.5	20.5	19.8	20.7	20.9
4H	19.8	20.7	20.1	20.9	21.1	19.5	20.3	19.7	20.6	20.8
6H	19.7	20.5	20.0	20.8	21.0	19.4	20.2	19.7	20.4	20.7
8H	19.7	20.5	20.0	20.7	21.0	19.3	20.1	19.6	20.4	20.6
12H	19.6	20.4	19.9	20.7	20.9	19.3	20.0	19.6	20.3	20.6
4H 2H	19.7	20.6	20.0	20.8	21.1	19.4	20.3	19.7	20.5	20.8
3H	19.8	20.6	20.1	20.8	21.1	19.5	20.2	19.8	20.5	20.8
4H	19.7	20.4	20.1	20.7	21.0	19.4	20.1	19.8	20.4	20.7
6H	19.7	20.3	20.0	20.6	20.9	19.3	19.9	19.7	20.3	20.6
8H	19.6	20.2	20.0	20.5	20.9	19.3	19.8	19.7	20.2	20.6
12H	19.6	20.1	20.0	20.4	20.8	19.2	19.7	19.6	20.1	20.5
8H 4H	19.6	20.2	20.0	20.5	20.9	19.3	19.9	19.7	20.2	20.6
6H	19.5	20.0	20.0	20.4	20.8	19.2	19.7	19.6	20.1	20.5
8H	19.5	19.9	19.9	20.3	20.7	19.2	19.6	19.6	20.0	20.4
12H	19.4	19.8	19.9	20.2	20.7	19.1	19.5	19.6	19.9	20.4
12H 4H	19.6	20.1	20.0	20.5	20.9	19.3	19.8	19.7	20.1	20.5
6H	19.5	19.9	19.9	20.3	20.7	19.2	19.6	19.6	20.0	20.4
8H	19.4	19.8	19.9	20.2	20.7	19.1	19.5	19.6	19.9	20.4
Variations with the observer position at spacings(CIE Pub.117):										
S = 1.0H	+ 2.6 / - 4.4					+ 2.4 / - 4.2				
1.5H	+ 4.3 / - 3.3					+ 4.0 / - 3.2				
2.0H	+ 3.3 / - 2.1					+ 3.2 / - 2.1				

CIE Pub.117, 3734 lm Total Lamp Luminous Flux Correct (8log(F/F0) = 4.6)
Area: 0.00580586 m2

C Range: 0 - 360DEG
C Interval: 30.0DEG
Test Speed: HIGH
Temperature:25.3℃
Operators:zoe
Test Date:2024-3-28

Range: 0 - 180DEG
Interval: 1.0DEG
Test System:EVERFINE GO-SPEX500_V1 SYSTEM V2.00.461
Humidity:65.0%
Test Distance:3.160m [K=1.0000]
Remarks: LAMP:BXRE-30G2000-C-83 Ra:90
LENS:PM-0139C 60R
DRIVER:TDI044NA0900EF 900mA
30minutes warm-up

UTILIZATION FACTORS TABLE

Test:U:120.11V I:0.3051A P:36.409W PF:0.9925 Freq:59.98Hz Lamp Flux:3734.05x1 lm		
NAME: 2319.221-H3AM	TYPE:	WEIGHT:
SPEC.: 3000K	DIM.:	SERIAL No.: 2403280238
MFR.: RISE	SUR.: 0.00580586m2	Shielding Angle:

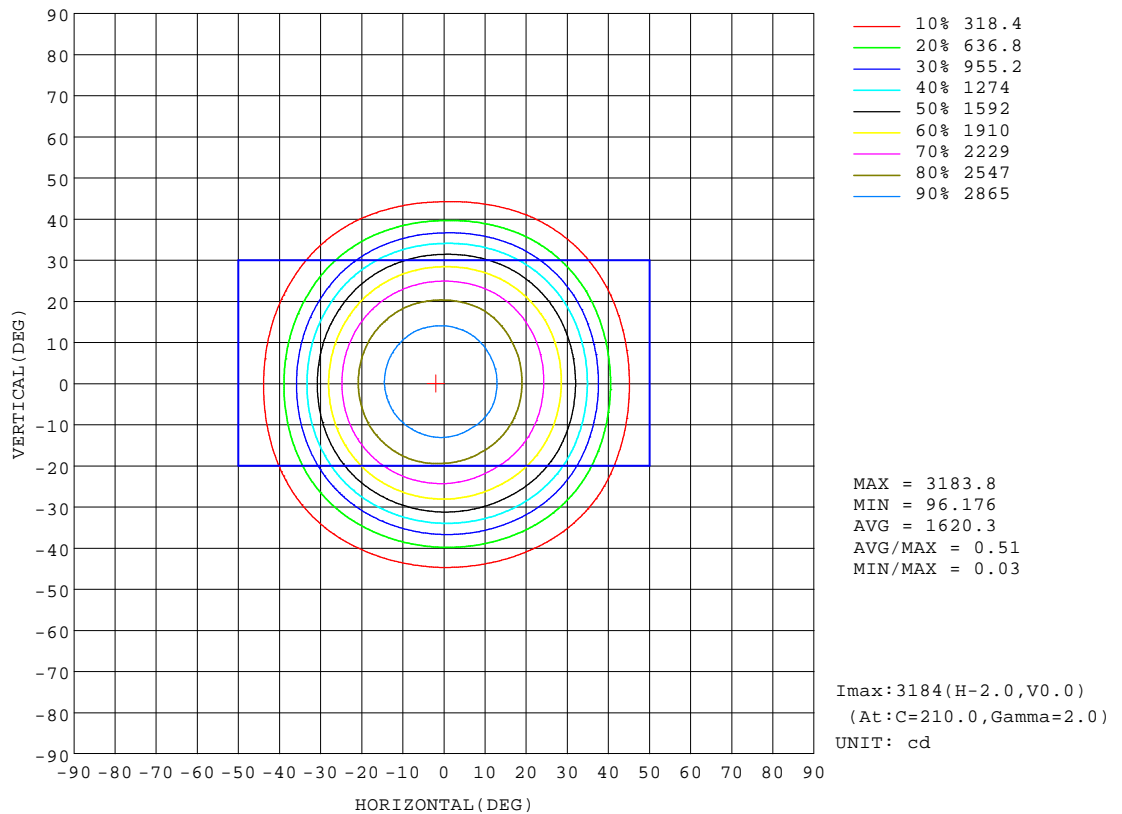
REFLECTANCE										
Ceiling	0.8	0.8	0.8	0.7	0.7	0.7	0.5	0.5	0.5	0
Walls	0.7	0.5	0.3	0.7	0.5	0.3	0.7	0.5	0.3	0
Working plane	0.2	0.2	0.2	0.2	0.2	0.2	0.2	0.2	0.2	0
ROOM INDEX	UTILIZATION FACTORS(PERCENT) $k(RI) \times RCR = 5$									
k = 0.60	72	66	62	71	65	62	70	65	62	58
0.80	79	73	69	78	73	69	77	72	69	65
1.00	83	78	74	82	77	74	81	77	73	70
1.25	87	82	79	86	81	78	84	80	78	74
1.50	90	85	82	88	84	81	86	83	80	76
2.00	92	88	85	91	87	85	89	86	83	79
2.50	94	90	88	92	89	87	90	87	85	80
3.00	95	92	90	94	91	89	91	89	87	81
4.00	97	95	93	96	93	91	92	91	89	83
5.00	98	96	95	97	95	93	93	92	90	84
ROOM INDEX	UF(total)									Direct
According to DIN EN 13032-2 2004			Suspended					SHRNOM = 1.25		

C Range: 0 - 360DEG
C Interval: 30.0DEG
Test Speed: HIGH
Temperature:25.3℃
Operators:zoe
Test Date:2024-3-28

Range: 0 - 180DEG
Interval: 1.0DEG
Test System:EVERFINE GO-SPEX500_V1 SYSTEM V2.00.461
Humidity:65.0%
Test Distance:3.160m [K=1.0000]
Remarks: LAMP:BXRE-30G2000-C-83 Ra:90
LENS:PM-0139C 60R
DRIVER:TDI044NA0900EF 900mA
30minutes warm-up

ISOCANDELA DIAGRAM

Test:U:120.11V I:0.3051A P:36.409W PF:0.9925 Freq:59.98Hz Lamp Flux:3734.05x1 lm		
NAME: 2319.221-H3AM	TYPE:	WEIGHT:
SPEC.: 3000K	DIM.:	SERIAL No.: 2403280238
MFR.: RISE	SUR.: 0.00580586m2	Shielding Angle:

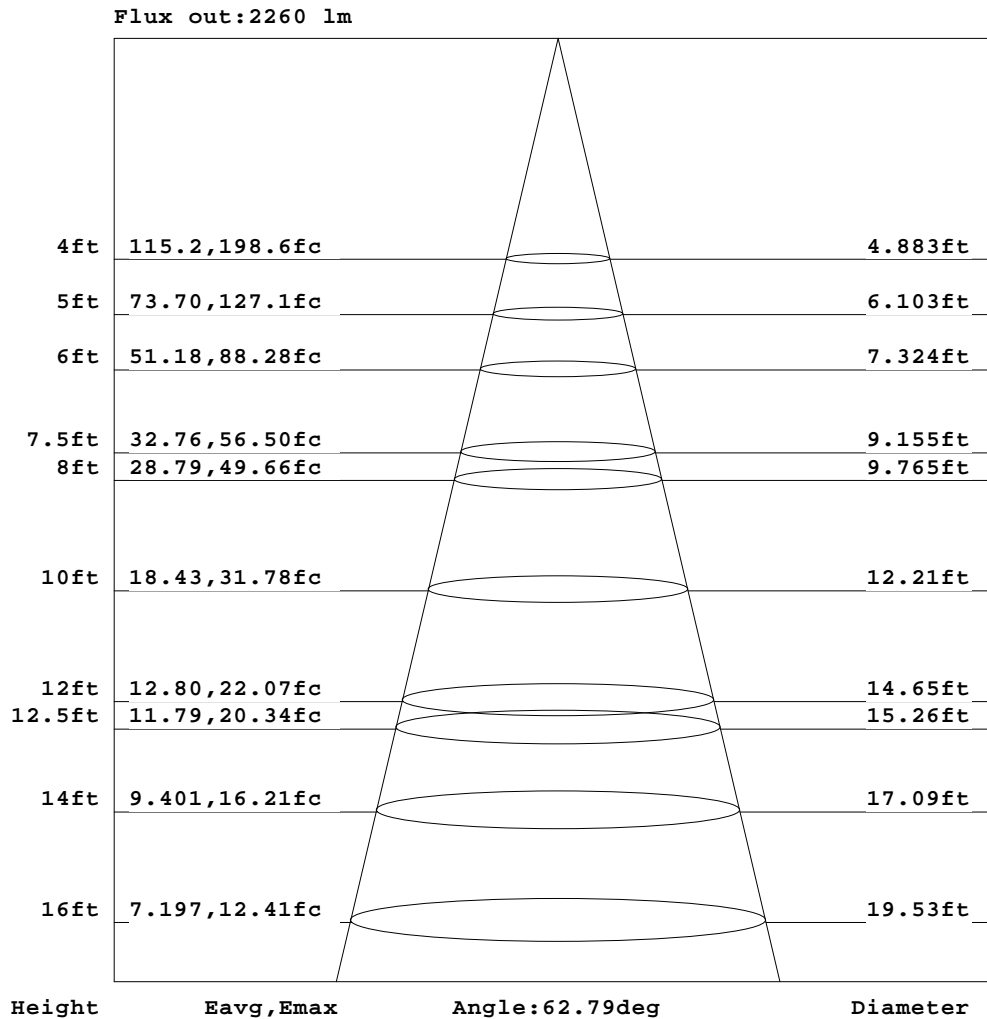


C Range: 0 - 360DEG
C Interval: 30.0DEG
Test Speed: HIGH
Temperature: 25.3 °C
Operators: zoe
Test Date: 2024-3-28

Range: 0 - 180DEG
Interval: 1.0DEG
Test System: EVERFINE GO-SPEX500_V1 SYSTEM V2.00.461
Humidity: 65.0%
Test Distance: 3.160m [K=1.0000]
Remarks: LAMP: BXRE-30G2000-C-83 Ra: 90
LENS: PM-0139C 60R
DRIVER: TDI044NA0900EF 900mA
30minutes warm-up

AAI Figure

Test:U:120.11V I:0.3051A P:36.409W PF:0.9925 Freq:59.98Hz Lamp Flux:3734.05x1 lm		
NAME: 2319.221-H3AM	TYPE:	WEIGHT:
SPEC.: 3000K	DIM.:	SERIAL No.: 2403280238
MFR.: RISE	SUR.: 0.00580586m2	Shielding Angle:



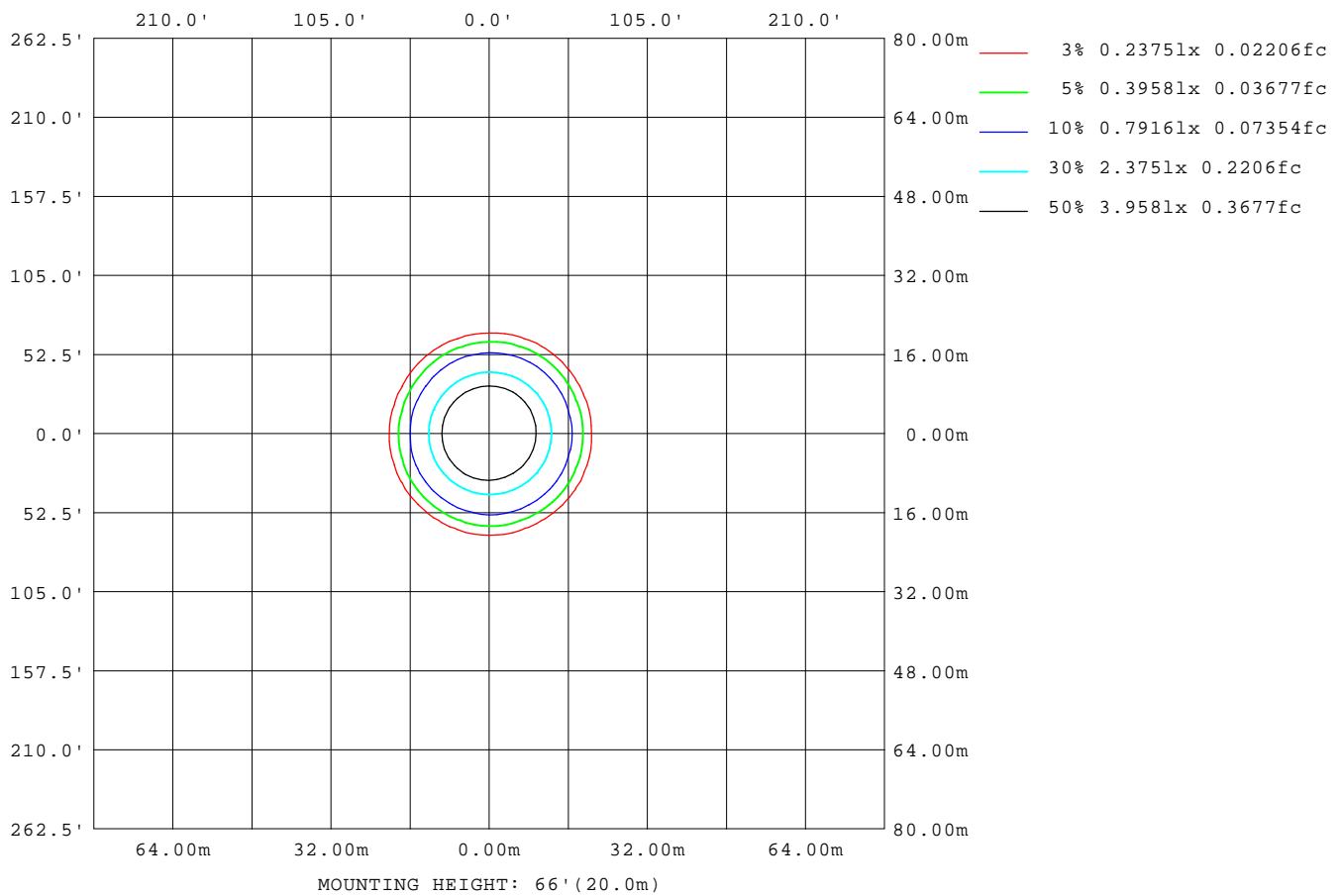
Note: The Curves indicate the illuminated area and the average illumination when the luminaire is at different distance.

C Range: 0 - 360DEG
C Interval: 30.0DEG
Test Speed: HIGH
Temperature: 25.3 °C
Operators: zoe
Test Date: 2024-3-28

Range: 0 - 180DEG
Interval: 1.0DEG
Test System: EVERFINE GO-SPEX500_V1 SYSTEM V2.00.461
Humidity: 65.0%
Test Distance: 3.160m [K=1.0000]
Remarks: LAMP: BXRE-30G2000-C-83 Ra: 90
LENS: PM-0139C 60R
DRIVER: TDI044NA0900EF 900mA
30minutes warm-up

ISOLUX DIAGRAM

Test:U:120.11V I:0.3051A P:36.409W PF:0.9925 Freq:59.98Hz Lamp Flux:3734.05x1 lm		
NAME: 2319.221-H3AM	TYPE:	WEIGHT:
SPEC.: 3000K	DIM.:	SERIAL No.: 2403280238
MFR.: RISE	SUR.: 0.00580586m2	Shielding Angle:



C Range: 0 - 360DEG
C Interval: 30.0DEG
Test Speed: HIGH
Temperature:25.3℃
Operators:zoe
Test Date:2024-3-28

Range: 0 - 180DEG
Interval: 1.0DEG
Test System:EVERFINE GO-SPEX500_V1 SYSTEM V2.00.461
Humidity:65.0%
Test Distance:3.160m [K=1.0000]
Remarks: LAMP:BXRE-30G2000-C-83 Ra:90
LENS:PM-0139C 60R
DRIVER:TDI044NA0900EF 900mA
30minutes warm-up

LED Avg.L Report

Test:U:120.11V I:0.3051A P:36.409W PF:0.9925 Freq:59.98Hz Lamp Flux:3734.05x1 lm		
NAME: 2319.221-H3AM	TYPE:	WEIGHT:
SPEC.: 3000K	DIM.:	SERIAL No.: 2403280238
MFR.: RISE	SUR.: 0.00580586m2	Shielding Angle:

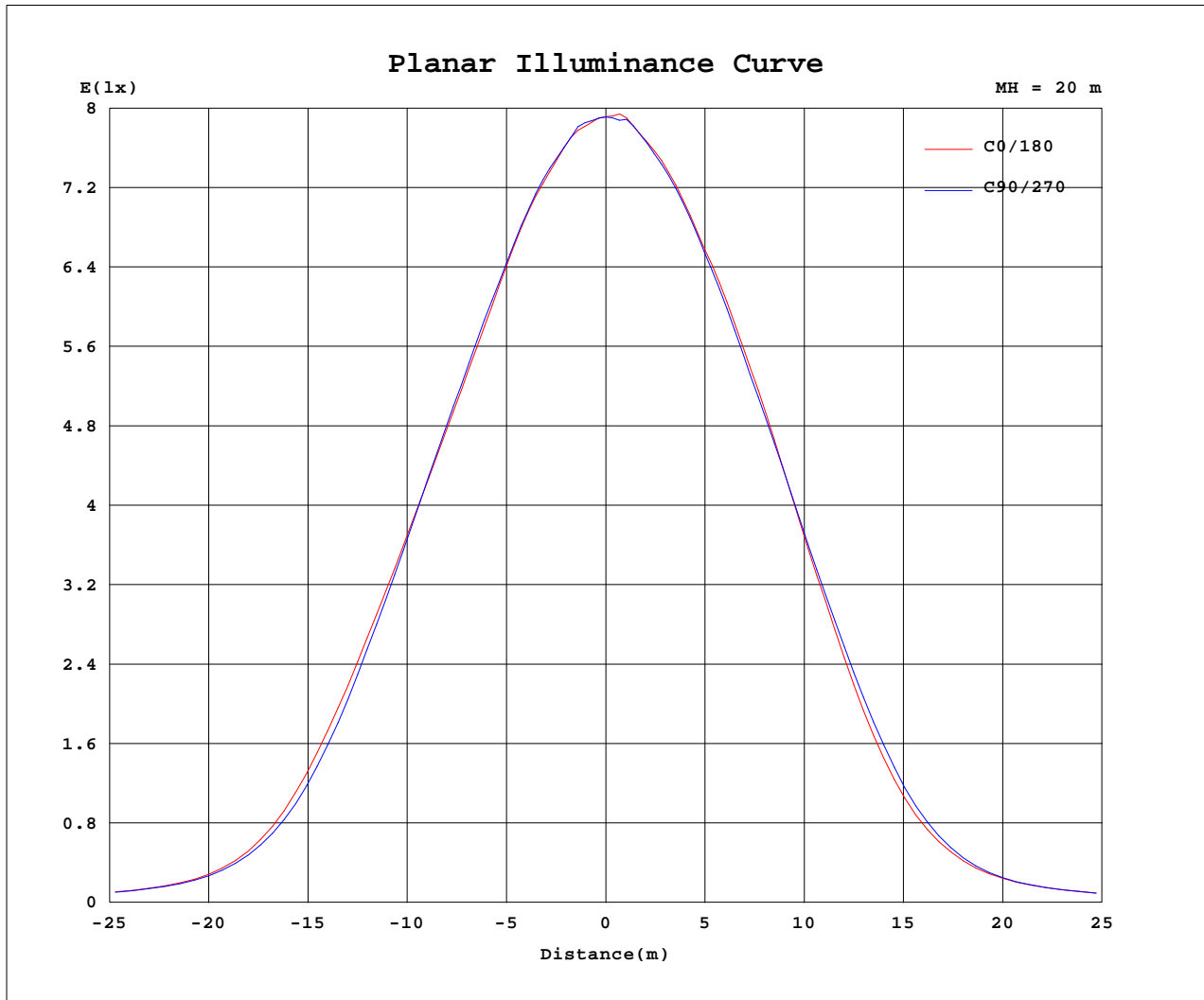
AvgL	cd/m2
L_0~180(65)av	19650
L_0~180(75)av	6546
L_0~180(85)av	241
L_90~270(65)av	19825
L_90~270(75)av	6864
L_90~270(85)av	220
L_45(65)av	19829
L_45(75)av	6817
L_45(85)av	199

Standard: GB/T 29293-2012

C Range: 0 - 360DEG
C Interval: 30.0DEG
Test Speed: HIGH
Temperature:25.3℃
Operators:zoe
Test Date:2024-3-28

Range: 0 - 180DEG
Interval: 1.0DEG
Test System:EVERFINE GO-SPEX500_V1 SYSTEM V2.00.461
Humidity:65.0%
Test Distance:3.160m [K=1.0000]
Remarks: LAMP:BXRE-30G2000-C-83 Ra:90
LENS:PM-0139C 60R
DRIVER:TDI044NA0900EF 900mA
30minutes warm-up

Planar Illuminance Curve



C Range: 0 - 360DEG
 C Interval: 30.0DEG
 Test Speed: HIGH
 Temperature: 25.3 °C
 Operators: zoe
 Test Date: 2024-3-28

Range: 0 - 180DEG
 Interval: 1.0DEG
 Test System: EVERFINE GO-SPEX500_V1 SYSTEM V2.00.461
 Humidity: 65.0%
 Test Distance: 3.160m [K=1.0000]
 Remarks: LAMP: BXRE-30G2000-C-83 Ra:90
 LENS: PM-0139C 60R
 DRIVER: TDI044NA0900EF 900mA
 30minutes warm-up



LUMINOUS DISTRIBUTION INTENSITY DATA

Test:U:120.11V I:0.3051A P:36.409W PF:0.9925 Freq:59.98Hz Lamp Flux:3734.05x1 lm		
NAME: 2319.221-H3AM	TYPE:	WEIGHT:
SPEC.: 3000K	DIM.:	SERIAL No.: 2403280238
MFR.: RISE	SUR.: 0.00580586m2	Shielding Angle:

Table--1

UNIT: cd

C(DEG) (DEG)	0	30	60	90	120	150	180	210	240	270	300	330						
0	3166	3166	3166	3166	3166	3166	3166	3166	3166	3166	3166	3166						
5	3118	3122	3119	3119	3118	3125	3130	3135	3136	3130	3122	3118						
10	2979	2984	2979	2990	2999	3011	3026	3032	3034	3013	2992	2982						
15	2758	2764	2753	2775	2803	2835	2848	2850	2845	2824	2803	2770						
20	2488	2489	2486	2514	2560	2590	2598	2602	2586	2564	2555	2507						
25	2179	2166	2148	2176	2196	2209	2212	2215	2218	2218	2232	2207						
30	1786	1773	1728	1726	1711	1701	1690	1690	1725	1748	1785	1793						
35	1260	1246	1190	1157	1109	1081	1059	1059	1118	1157	1225	1255						
40	686	679	646	623	581	567	546	537	576	600	657	676						
45	323	327	308	306	291	285	277	268	283	284	311	315						
50	187	189	179	181	177	174	169	165	171	170	183	185						
55	122	125	120	118	114	110	107	106	109	111	117	119						
60	83.3	85.3	82.6	79.9	76.5	72.9	70.5	71.1	73.7	75.9	79.0	80.6						
65	53.5	55.2	52.8	50.4	47.4	44.7	43.0	43.1	44.9	46.9	49.8	51.1						
70	31.2	31.9	30.5	28.2	26.1	24.1	22.5	22.8	24.1	26.0	28.0	29.4						
75	12.0	12.7	11.8	10.9	9.90	8.50	7.70	8.13	8.79	9.71	10.8	11.2						
80	1.00	1.18	0.69	0.46	0.39	0.34	0.26	0.23	0.27	0.33	0.41	0.63						
85	0.15	0.13	0.12	0.13	0.11	0.11	0.10	0.08	0.08	0.10	0.09	0.10						
90	0.00	0.00	0.00	0.00	0.00	0.00	0.00	0.00	0.00	0.00	0.00	0.00						
95	0.00	0.00	0.00	0.00	0.00	0.00	0.00	0.00	0.00	0.00	0.00	0.00						
100	0.00	0.00	0.00	0.00	0.00	0.00	0.00	0.00	0.00	0.00	0.00	0.00						
105	0.00	0.00	0.00	0.00	0.00	0.00	0.00	0.00	0.00	0.00	0.00	0.00						
110	0.00	0.00	0.00	0.00	0.00	0.00	0.00	0.00	0.00	0.00	0.00	0.00						
115	0.00	0.00	0.00	0.00	0.00	0.00	0.00	0.00	0.00	0.00	0.00	0.00						
120	0.00	0.00	0.00	0.00	0.00	0.00	0.00	0.00	0.00	0.00	0.00	0.00						
125	0.00	0.00	0.00	0.00	0.00	0.00	0.00	0.00	0.00	0.00	0.00	0.00						
130	0.00	0.00	0.00	0.00	0.00	0.00	0.00	0.00	0.00	0.00	0.00	0.00						
135	0.00	0.00	0.00	0.00	0.00	0.00	0.00	0.00	0.00	0.00	0.00	0.00						
140	0.00	0.00	0.00	0.00	0.00	0.00	0.00	0.00	0.00	0.00	0.00	0.00						
145	0.00	0.00	0.00	0.00	0.00	0.00	0.00	0.00	0.00	0.00	0.00	0.00						
150	0.00	0.00	0.00	0.00	0.00	0.00	0.00	0.00	0.00	0.00	0.00	0.00						
155	0.00	0.00	0.00	0.00	0.00	0.00	0.00	0.00	0.00	0.00	0.00	0.00						
160	0.00	0.00	0.00	0.00	0.00	0.00	0.00	0.00	0.00	0.00	0.00	0.00						
165	0.00	0.00	0.00	0.00	0.00	0.00	0.00	0.00	0.00	0.00	0.00	0.00						
170	0.00	0.00	0.00	0.00	0.00	0.00	0.00	0.00	0.00	0.00	0.00	0.00						
175	0.00	0.00	0.00	0.00	0.00	0.00	0.00	0.00	0.00	0.00	0.00	0.00						
180	0.00	0.00	0.00	0.00	0.00	0.00	0.00	0.00	0.00	0.00	0.00	0.00						

C Range: 0 - 360DEG
C Interval: 30.0DEG
Test Speed: HIGH
Temperature:25.3℃
Operators:zoe
Test Date:2024-3-28

Range: 0 - 180DEG
Interval: 1.0DEG
Test System:EVERFINE GO-SPEX500_V1 SYSTEM V2.00.461
Humidity:65.0%
Test Distance:3.160m [K=1.0000]
Remarks: LAMP:BXRE-30G2000-C-83 Ra:90
LENS:PM-0139C 60R
DRIVER:TDI044NA0900EF 900mA
30minutes warm-up